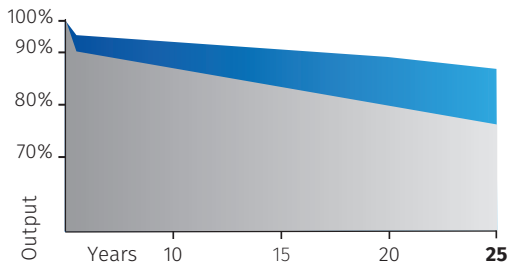


FU 250 M Silk® Pro Orange

PERC MBB half-cut cells

PERFORMANCE GUARANTEE

Max power decrease from 2nd year 0,5%/year
 97% at the end of first year
 90% at the end of 20th year
 87% at the end of 25th year



■ Market standard performances
 ■ FuturaSun performances



250 Wp

POWER RANGE

-0.35 %/°C

TEMPERATURE COEFFICIENT



120 HALF-CUT MBB CELLS

GENERAL FEATURES & KEY BENEFITS



- 25-year performance guarantee & 15-year product warranty

- Particularly suitable for Building Integrated Photovoltaics (BIPV)



RAL 8023

- Orange colored glass and frame for special architectural requirements (RAL 8023)



- For buildings of high aesthetical value and for areas subject to landscape constraints

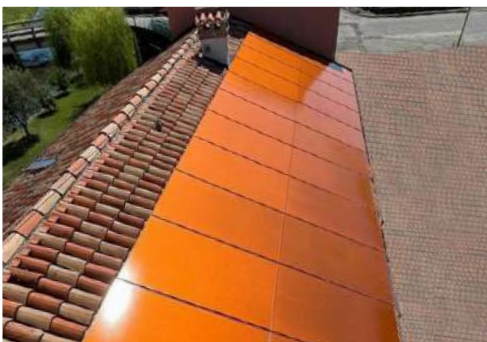
- Possibility to customize frame and glass colour



- Less shades and more reflected light to the cell thanks to the round ribbon



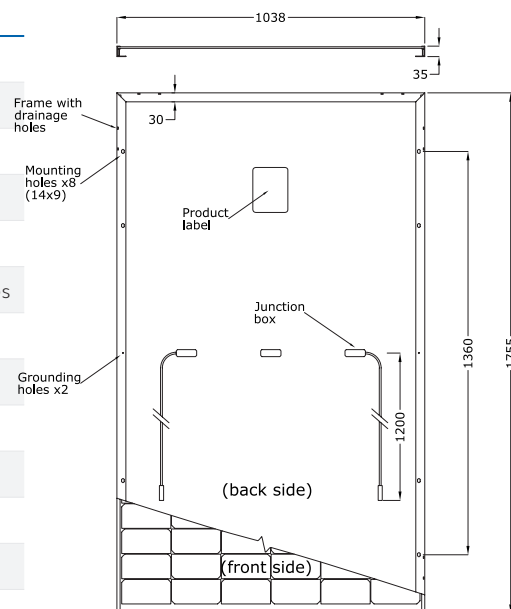
- 2 independent section design secures a higher energy yield under shaded conditions



For detailed information, please refer to the installation manual

MECHANICAL SPECIFICATIONS

Dimensions	1755 x 1038 x 35 mm
Weight	19.7 kg
Glass	Orange colored RAL 8023, tempered, thickness, 3.2 mm
Cells	120 monocrystalline half cut MBB PERC cells 166 x 83 mm
Frame	Varnished aluminium frame with mounting and drainage holes
Junction boxes	Certified according to IEC 62790, IP 68 approved, 3 bypass diodes
Cables	Solar cable, length 1200 mm or customized assembled with 4mm ² compatible connectors
Maximum reverse current (I _r)	20 A
Maximum system voltage	1000 V (1500 V on request)
Mechanical load (snow)	Design load: 3600 Pa 5400 Pa (including safety factor 1.5)
Mechanical load (wind)	Design load: 1600 Pa 2400 Pa (including safety factor 1.5)
Protection Class	II - accordance to IEC 61730



Note: dimensions in mm, tolerance +/- 2 mm

ELECTRICAL DATA - STC*

FU 250 M

Module power (P _{max})	W	250
Open circuit voltage (V _{oc})	V	40.77
Short circuit current (I _{sc})	A	7.63
Maximum power voltage (V _{mpp})	V	34.61
Maximum power current (I _{mp})	A	7.23

ELECTRICAL DATA - NMOT**

FU 250 M

Module power (P _{max})	W	189
Open circuit voltage (V _{oc})	V	38.49
Short circuit current (I _{sc})	A	6.01
Maximum power voltage (V _{mpp})	V	32.41
Maximum power current (I _{mp})	A	5.84

TEMPERATURE RATINGS

Temperature coefficient I _{sc}	%/°C	0.05
Temperature coefficient V _{oc}	%/°C	-0.28
Temperature coefficient P _{max}	%/°C	-0.35
NMOT**	°C	45
Operating temperature	°C	from -40 to +85

PACKAGING INFORMATION

Quantity / Pallet	31 -34 pcs
Container 40' HQ	845 pcs / 26 pallets

*Standard Test Conditions STC: 1000 W/m² - AM 1.5 - 25 °C - tolerance: P_{max} (±3%), V_{oc} (±4%), I_{sc} (±5%)

**Nominal Module Operating Temperature NMOT: 800 W/m² - T=45 °C - AM 1.5

Notice: All data and specifications are preliminary and subject to change without notice

