

ODA-108MHDBRx

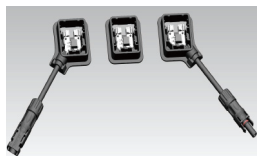
Topcon Technology

POWER RANGE

440W~465W

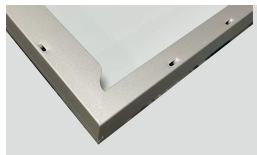
CELL SIZE

182*94mm



JUNCTION BOX

Waterproof protection grade: IP68
Safety Level: Class II
Maximum System Voltage: 1500V
outstanding waterproof level
Effectively resist harsh environments

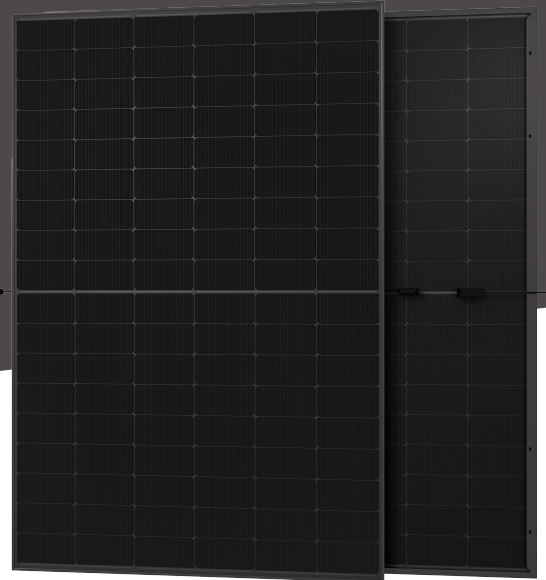


Frame

Strong mechanical load
resistance up to 5400Pa
Anodic oxidation layer resistant to
chemical corrosion



16BB

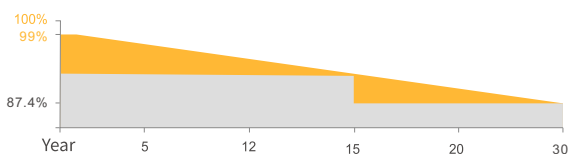


QUALIFICATIONS AND CERTIFICATES



· IEC61215 / · IEC61730

WARRANTY



15 YEARS Guarantee on product material and workmanship

30 YEARS Linear Power output warranty



SMBB Technology

Better light trapping and current collection to improve module power output and reliability.



PID Resistance

Excellent Anti-PID performance guarantee via optimized mass-production process and materials control.



Higher Power Output

Module power increases 5-25% generally, bringing significantly lower LCOE and higher IRR.



Enhanced Mechanical Load

Certified to withstand: wind load (2400 Pascal) and snow load (5400 Pascal).

NINGBO OSDA SOLAR CO.,LTD
www.osdasol.com

OSDA Solar established in 2008, is a high-tech enterprise integrating R&D, production and sales of solar energy products. It is committed to the overall solution of distributed photovoltaic system and provides services from consulting, design, construction, financing to intelligent operation and maintenance.

OSDA has 3 production sites in China and branches and representative offices in more than 10 countries overseas. Products include solar cells, modules, On/Off grid solar system, solar pump and other solar related applications. Our products have passed many international certifications such as TÜV, MCS, CEC, IEC, ISO, CE, CQC and so on. With excellent quality, our products are exported to more than 100 countries of the world.

Since its establishment, OSDA has always followed the idea of "Smart energy Lightening future". It has followed the steps of "the Belt and Road Initiative", we bring bright light to the countries and people who are short of electricity. Sharing the concept of modern civilization, and building a green home together.

ELECTRICAL DATA(STC)

Model Type	ODA440-27V-MHDBRx	ODA445-27V-MHDBRx	ODA450-27V-MHDBRx	ODA455-27V-MHDBRx	ODA460-27V-MHDBRx	ODA465-27V-MHDBRx
Peak Power(Pmax)	440.00	445.00	450.00	455.00	460.00	465.00
Maximum Power Voltage(Vmp)	32.81	32.02	33.21	33.41	33.60	33.79
Maximum Power Current(Imp)	13.41	13.48	13.55	13.62	13.69	13.76
Open Circuit Voltage(Voc)	39.38±3%	39.59±3%	39.78±3%	39.98±3%	40.17±3%	40.36±3%
Short Circuit Current(Isc)	13.86±3%	13.93±3%	14.00±3%	14.07±3%	14.14±3%	14.21±3%
Module Efficiency(%)	22.02	22.27	22.52	22.77	23.02	23.27

*STC: irradiance 1000W/m², AM1.5, and cell temperature of 25°C

ELECTRICAL DATA(NMOT)

Model Type	ODA440-27V-MHDBRx	ODA445-27V-MHDBRx	ODA450-27V-MHDBRx	ODA455-27V-MHDBRx	ODA460-27V-MHDBRx	ODA465-27V-MHDBRx
Peak Power(Pmax)	333.00	336.00	340.00	344.00	348.00	352.00
Maximum Power Voltage(Vmp)	31.04	31.24	31.42	31.60	31.78	31.96
Maximum Power Current(Imp)	10.73	10.76	10.83	10.89	10.96	11.01
Open Circuit Voltage(Voc)	37.25±3%	37.45±3%	37.63±3%	37.82±3%	38.00±3%	38.18±3%
Short Circuit Current(Isc)	11.26±3%	11.29±3%	11.36±3%	11.43±3%	11.50±3%	11.57±3%

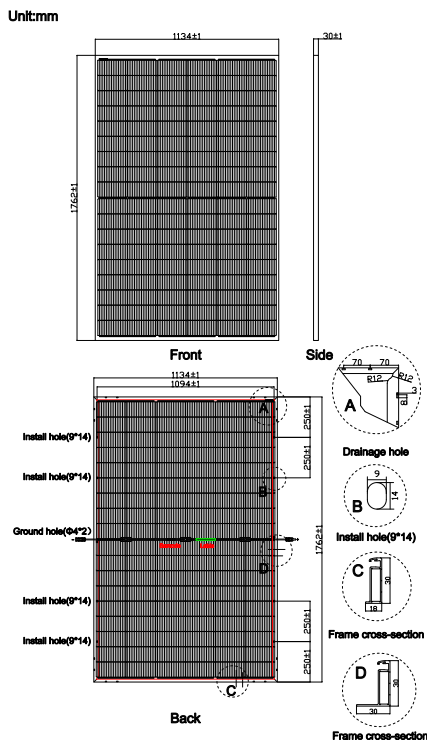
*NMOT: irradiance 800 W/m², AM 1.5, ambient temperature 20°C, wind speed 1 m/s

ELECTRICAL DATA(BNPI)

Model Type	ODA440-27V-MHDBRx	ODA445-27V-MHDBRx	ODA450-27V-MHDBRx	ODA455-27V-MHDBRx	ODA460-27V-MHDBRx	ODA465-27V-MHDBRx
Peak Power(Pmax)	484.00	490.00	495.00	501.00	506.00	512.00
Maximum Power Voltage(Vmp)	32.81	33.02	33.21	33.41	33.60	33.79
Maximum Power Current(Imp)	14.75	14.82	14.91	14.98	15.06	15.14
Open Circuit Voltage(Voc)	39.38±3%	39.59±3%	39.78±3%	39.98±3%	40.17±3%	40.36±3%
Short Circuit Current(Isc)	15.56±3%	15.64±3%	15.72±3%	15.80±3%	15.89±3%	15.97±3%

*BNPI: back irradiance 135W/m², AM1.5, and cell temperature of 25°C

PV DRAWINGS



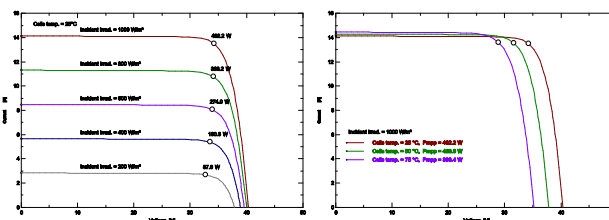
TEMPERATURE & MAXIMUM RATING

Maximum System Voltage (V)	1500
Maximum Series Fuse Rating (A)	30
Power Tolerance (W)	0~+3%
Pmax Temperature Coefficients (W/°C)	-0.290%
Voc Temperature Coefficients (V/°C)	-0.250%
Isc Temperature Coefficients (A/°C)	+0.045%
NMOT Nominal Module Operating Temperature (°C)	45±2
Operating and Storage Temperature (°C)	-40~+85

MECHANICAL CHARACTERISTICS

Cell Type	182*94 Mono
No. of Cells	108 (12*9)
Dimensions	1762*1134*30mm
Weight	26.0kg
Front Glass	2.0mm AR coating tempered glass
Back Glass	2.0mm Glazed Glass
Frame	Anodized Aluminium Alloy
Junction box	IP68 3diodes
Output cables	4mm ² cable 35cm (Including MC4 connector)
Max Wind Load/Snow Load	2400Pa/5400Pa

IV CURVE (460W)



PACKING WAY

40HQ container

26 Packages/962pcs



We Are Seeking Agents And Partners!

ADD:1-1, No.136, Haichuan Road, Jiangbei Area, Ningbo City, Zhejiang Province, P.R. China

Tel: 86-574-87915068
Call: 86-13566302808
E-mail: sales@osdasol.com